

Art League of Rhode Island

Issue 20

November 2007

Mark Your Calendars

—details inside—

- Dec 1, 1-5 pm . Monohasset Mills . Open Studios
- Dec 2, 1-5 pm . Landay Opening Reception
- Dec 12 . Gateway Project Deadline
- Dec 14, 5-7:30 pm . Timberland Boot Project Party . Providence Art Club
- Jan 6th 1-4 pm . Opening Reception Pawtucket Watercolor Society
- Apr 2 –27 . Associate Members' Show . Apr 6, 1-3 pm Opening Reception
- TBA Hasbro Mural Artists' reception

Inside this issue:

More Murals!	2
Shows & Open Studios	3
Member Spotlight	3
Exhibition Alert	4
Newsletter Deadline	4
Gateway Competition	5
Reminders	6
ALRI Who's Who	6

Hall of Masters Project

Murals in the Making

The Hall of Masters Project at Hasbro Children's Hospital will be completed soon. It began when Rhode Island artists collaborated to transform the exam rooms with their interpretations of the works of three American "Masters."

The concept behind this project was to select a famous work of art and incorporate its likeness in a fanciful, imaginative painting suitable for a children's hospital.

To date, six murals by ALRI members have

been installed to critical acclaim.

Within the next few months five new murals, selected by Paula Most, Arts Coordinator for Hasbro, will be added to the Hasbro collection.

ALRI muralists responsible for the five new murals are: Kenn Speiser, Madolin Maxey, Aimee Heru, Marjorie Ball, Evelyn Thistle Rhodes, Johanna McKenzie, Gayle Mangan Kassal, and Krzysztof Mathews.

Muralist, Aimee Heru, offers ALRI this insight

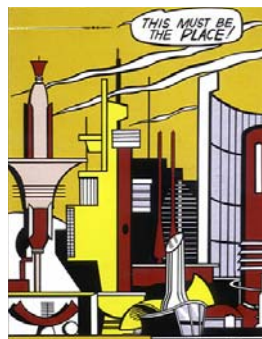


Aimee Heru works on a mural created with Marjorie Ball and based on Marsden Hartley's painting: "Wild Roses."

into the selection of her "Master":

Viewing Marsden Hartley's paintings of the rugged Maine coastline, his work becomes my favorite interpretation of an area I know well. He often stayed within a mile of the coastal town my ancestors settled, a place

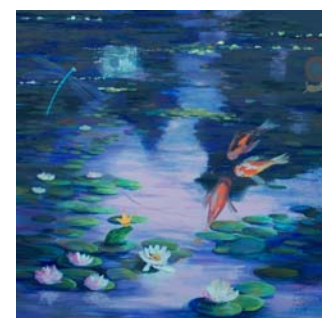
(Continued on page 2)



This Must Be The Place
by Krzysztof Mathews



Titled - after Keith Haring's Untitled
by Kenn Speiser and Madolin Maxey



A Child's Monet
by Evelyn Thistle Rhodes and Johanna McKenzie

(Continued from page 1)

I visit summers not too far from Acadia National Park. Ruggedness is a quality that can determine survival in this region. Recently, a RI neighbor declared she summered on a nearby island, and so I asked her what she was doing during the "thunder squall" of last June. Her expression became dark and earnest as she described her narrow escape to safe harbor.

The painting I borrowed called "Wild Roses", recalls a ceremonial custom held in Nova Scotia, where funerary wreaths were tossed into the ocean in memory of sailors lost at sea. Marjorie Ball and I shifted colors in the piece to reflect a less somber tone. Enlarged to the scale we painted, that tissue paper might otherwise have looked like the imposing "floebergs" that once caused concern for shipmen heading out to sea. — Aimee Heru

Van Gogh's Playground

For her mural inspiration, Gayle Mangan Kassal chose Van Gogh's "Iris", Saint - Remy, 1890, and children playing on a playground.

Mangan Kassal reports that the whole painting IS the reproduction. She says, "I took a little twist from what you all were doing. I took the whole painting and cut and changed some, but really made the entire "background" Van Gogh's Irises. Then I had fun with adding my own playful bugs." It is a 4' x 4' canvas stretched on stretcher bars then framed at NE Picture Framers. Mangan Kassal also mailed Hasbro a print of Van Gogh's Irises to hang beside the mural.



by Gayle Mangan Kassal

Muralists and more ...

Krzysztof Mathews based the creation of his mural on a postcard by Lichtenstein called "This Must Be The Place" created in the late 1950s for a science fiction convention.

Evelyn Thistle Rhodes and Johanna McKenzie were inspired to paint A Child's Monet by one of Monet's water lily paintings.

Kenn Speiser and Madolin Maxey call their mural "Titled - after Keith Haring's Untitled", because it seemed like the flip side to one of Haring's works.

They chose Keith Haring with the children in mind: simple shapes, bright colors, graffiti-shaped animals.

Before they chose Haring, they walked through the hospital floor with Paula Most, Hasbro's art coordinator, and met some

of the kids. From the exam rooms, patient rooms, and lounge where they were watching TV, you could see various parts of Providence and the waterfront.

Speiser and Maxey decided to make a composite painting of Providence buildings, new bridge, trains, big blue bug, Rhode Island Red chickens, cars, baseball, billboards, and dolphins in the bay. They have Keith Haring's dog and cat shapes traveling about their imaginary cityscape. They specifically used Keith Haring's dolphin print as a billboard.

The right kind of art in a healthcare setting can achieve more than beautification. It goes beyond decoration to become a true component of the healing environment, as much as a stethoscope or an antibiotic.

While improving the aesthetic atmosphere, the arts also contribute to healing. Studies show that involving patients in artistic programs and activities helps the patient recover physically, emotionally and spiritually.



Above all, we are coming to understand that the arts incarnate the creativity of a free people. When the creative impulse cannot flourish, when it cannot freely select its methods and objects, when it is deprived of spontaneity, then society severs the root of art. John Fitzgerald Kennedy

Upcoming Shows & Open Studio Events

Saturday, December 1, 11-5 pm
Open Studios

Julienne Saslaw is one of a number of artists living and working in Monohasset Mills in Providence who will open their studios to visitors on December 1st.

Monohasset Mills is one of the few live/work artist communities in Providence. It is located at 532 Kinsley Avenue, across the street from the Woonasquatucket River Greenway .

Sunday, December 2, 1-5 pm
Opening reception ~ *Learning to Seize the Light* ~

Associate Member Jerry M. Landay of Bristol will present an exhibition of his digital images from **December 2 through Dec. 30** in the Gallery Room of the Portsmouth RI Public Library, Rt. 138, 2658 East Main Road. Hours are: Mondays thru Thursdays, 9 am until 8 pm, Fridays & Saturdays from 9 until 5, and Sundays from 1 to 5. For more information call 401-254-2291.



Quintessence by Jerry Landay

Member Spotlight — **Kendra Bidwell Ferreira**

M recently
 achieved
 Signature

Membership to the Colored Pencil Society of America by having three pieces of artwork accepted into three of CPSA's international exhibits.

This year, Kendra's colored pencil artwork "Morning Surf Monhegan Island" was accepted into the 15th annual international colored pencil exhibit in Bethesda, Maryland and was also awarded the Airfloat Strongbox Award for Outstanding Recognition.

Kendra's artwork has also been accepted into the American Artist Professional League's 79th Annual Exhibition at the Salmagundi Club, NYC, November 6-16.



Morning Surf Monhegan Island
 by Kendra Bidwell Ferreira
 colored pencil 11x15"

Members' First Special Exhibit of 2008

ALRI Artist Members' "Special Exhibit" Watercolor Show at the Rhode Island Watercolor Society —

Exhibitions Chair, Priscilla Malone announces that the first members' **Special Exhibit of 2008** will be held at the prestigious **Rhode Island Watercolor Society's Gallery** in Slater Park, Pawtucket for the **month of January 2008**.

This exhibit is **NON-JURIED** and open to all artist members in good financial standing. Members may submit one or two watercolor paintings. Mixed limited media paintings must be at least 80% watercolor.

The special exhibit requires no slides, no digital images, and no deadlines to meet. Members simply 'drop-off' paintings to the gallery on designated days, with a submission fee of \$15 for the first entry, \$25 for 2 entries. Gallery

Painting in watercolor is like walking a tight-rope; one must achieve a perfect balance between what the paint wants to do and what the artist wants to do, or all is lost.

Mary C. Taylor,
Watercolor Bold and Free

space is limited to a maximum of 60-65 works (depending on size). So, first to drop off their paintings gets the wall space!

The prospectus is being created in coordination with RIWS Gallery Coordinator and their guidelines for guest exhibits. Members can expect to receive an email and hard copy along with the dates for drop-offs and the opening reception.

The Exhibitions Committee members are working diligently to promote ALRI artists in many fabulous venues in the next year; including the 2nd Associate

Members' Exhibit (see below for details).

Credit for the success of last year's first-ever Associate Members' Show goes to Carol Fitzimonds – who is already preparing for another terrific exhibit.

Check your mailboxes, and watch for more exhibit information in the ALRI December newsletter.

ALRI Newsletter Submission Deadline

The official deadline is the 26th of each month with a newsletter delivery date of the first week of the following month.

Send all photos and information to
Iona Dobbins
ionadob@aol.com

Juried Associate Members' Exhibit at Gallery 297



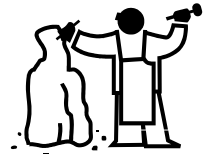
The next Juried Associate Exhibit at Gallery 297 will be April 2 – 27, 2008. The Opening Reception and Awards Presentation is set for Sunday, April 6th from 1-3pm.

There will be over \$500 in prizes awarded. Presentations to be made by ALRI Honorary Member, Gretchen Dow Simpson.

Gallery 297 Curator, Carol FitzSimonds, will be forming an associate member committee to work on the exhibit and related programs.

This is a wonderful opportunity to get more involved with the League, network with other artists, and voice your ideas. Work has already begun to promote this event. If you can, please sign up to help make this another outstanding league event.

PAWTUCKET GATEWAY DESIGN COMPETITION ANNOUNCEMENT



The City of Pawtucket in partnership with the John H. Chafee Blackstone River Valley National Heritage Corridor Commission is pleased to announce a competition to engage the design community in the development of a sculptural element to be located at the Visitor Center at the corner of Main Street and Roosevelt Avenue - the Gateway to the Blackstone Valley and the City's 307-Acre Arts and Entertainment District.

The City of Pawtucket has become well known for the Annual Pawtucket Arts Festival and its commitment to the visual and performing arts. The Visitor Center serves Pawtucket, the John H. Chafee Blackstone River Valley Heritage Corridor, the Slater Mill Historic Site (birthplace of the Industrial Revolution), and the State of RI. The challenge is to create an innovative design that responds to the unique diversity of the city's architecture and urban landscape and symbolizes the rich heritage of the region.

The competition is open to artists, landscape architects, architects, engineers, product and industrial designers. Multi-disciplinary teams are encouraged to participate.

The competition will consist of two stages: Stage 1 will be the submission of qualifications showing

previously completed projects. The jury will select (3) submissions to proceed to Stage 2. The selected artists will prepare design proposals for the project. A jury of Rhode Island design professionals, university professors and artists will review design submissions and select the finalist. The selected winning concept will be utilized to raise funds for fabrication of the project. Selection criteria will be based upon originality, creativity, contextual fit and constructability.

The designers selected to enter Stage 2 of the Pawtucket Gateway Design Competition will receive an award of \$1,500 each. The winning proposal will receive a total of \$6,000.

The deadline for Submission of Qualifications is December 12, 2007.

For registration information and application please visit www.pawtucketartsfestival.org or call 401-724-5200 extension 438 or email diane@dpr.necoxmail.com.

Diane Agostini, Pawtucket Gateway Design Competition

Department of Planning and Redevelopment
175 Main St. Pawtucket, RI 02860

Telephone 401 724-5200 ext. 438

Hours: Monday thru Friday 8:30 am to 4:30 pm

Reminders

ALRI Timberland Boot Project
(<http://02863project.blogspot.com>)

Dec 1-30th — Boots will be on display at Roger Williams University . Bristol, RI

Dec 14, 5-7:30 pm at Providence Art Club — Boot Project Party and exhibition of all the boots painted by the participating students from Central Falls High School. This event is open to all the students, their families and of course ALRI. Dan Butterworth, an honorary ALRI member, will be giving a performance based on the boots.

Let us know about your exhibits, events, classes, awards. See page 6 for newsletter deadline information.

Art League of Rhode Island OBJECTIVES

- Sponsor an annual exhibition of Rhode Island Artists
- Promote communication between artists and the general public
- Sponsor special events and programs to encourage and assist education in the arts
- Sponsor a biennial, national juried exhibition in Rhode Island

Board of Directors

James Kubiadowicz, *President*
Dora Atwater Millikin, *1st Vice President*
Mary Lou Smith, *2nd Vice President*
Len DeAngelis, *Executive Assistance*
Felicia Touhey, *Secretary*
Bill Willis, *Treasurer*

Committee Chairpersons

Johanna McKenzie, *Development*
Stephen Metcalf, *Education*
Evelyn Rhodes, *Governance*
Pam Neal, *Nominating*
Joan Boghossian
Bill Heydt

Iona Dobbins, *Director of Communications
& Senior Editor*
Paulette Miller, *Assistant Editor*

The Art League of Rhode Island (ALRI) was formed based on a shared vision to encourage and foster artistic recognition and growth among Rhode Island Artists. ALRI was incorporated with a goal to contribute, encourage and promote integrity and excellence in the arts in Rhode Island. The Art League of Rhode Island numbers among its founding members some of Rhode Island's most prominent artists working in a wide range of medium from painting to furniture making.

Artist Members . Rhode Island artists are encouraged to become members of the Art League of Rhode Island, and are juried into the organization by a distinguished jury of peers and professionals elected by the ALRI board. Artists may submit a resume, a maximum of 10 slides or digital images of their work and a non-refundable jury fee of \$25. All information and instructions are included in the downloaded membership application forms below. Once accepted, artist members will be notified by ALRI and a one time initiation fee of \$75 is required. Subsequent annual dues for founding and artist members are \$45.

www.artleagueri.org
info@artleagueri.org



To keep the ALRI database current,
please let us know of changes to your email or mailing address.

A Message from the President

Dear Members,

Whew! That was close! The October newsletter, that is. But technically, it arrived in October, so that counts for something. I think we are very close to getting it out on time - we are trying for the first week of every month - stay with us.

I'm finished with the first draft of the member directory which I will send out "as is" so that everyone can look it over and let me know of any errors. My intention was to make it a printable file able to be turned into a little book - unfortunately, this is too complicated for the time being - I'll work on it. The directory can still be printed out in several 8.5 x 11 pages or read online - not the best, but it provides all essential information regarding membership contacts.

Our meeting on the 24th was focused on a number of issues of vital import to ALRI: the associate show, Timberland progress and data base concerns, What we didn't get around to is discussing an event for spring and exploring the options for our community service activities - next time. Our search for a permanent home goes on. This process is far more involved than one would imagine. I ask for patience. This is a priority item and we will pursue it relentlessly - stay tuned.

We have another beautiful month to celebrate the changing landscape. Thanksgiving is near and I wish everyone peace and happiness in their celebrations with family and friends. In the current global situation and rising gas prices, it may seem difficult to find something to be thankful for. However, we live in the freest country on earth - no one can tell us what kind of art we can create, what we can write or what opinion we can express - I personally think we have a lot to be thankful for.

The Board has another meeting on November 28th. I will share specific details (promise) in the December edition.

You can always tell me what's on your mind by sending an e-mail to: info@artleagueri.org - I want to hear from you!

Thanks for being part of a great organization!

Warmest regards,

Jim

Jim Kubiadowicz